

Plat Ownership					Beginning Parcel Identification Number (PIN)					
Blue Steel Development LLC C/O James L Previte CPA					U-05-29-20-B10-000000-00000.0					
Address				City		State		Zip Code		
1905 S Florida Ave				Lakeland		FL		33803-2655		
T.D.	Plat Bk-Pg	Prior Parcel ID Number		OR Bk-Pg		Date Sale	Inst	Q/U	I/V	Reason Code
U	131-92	U-05-29-20-ZZZ-000002-37070.0		24627-372		Dec-16	WD	U	V	
Sp Dist	Nhd Code	DOR	Land Use	Zoning		Sales Price		Prior Folio No		
	220011	1000	0194	PD		5,000,000		65052.0000		
Plat Name					ADDRESSES ISSUED ON 06/29/2018					
Crossroads Commerce Center					TAMPA 33610					
Lot				Address	Parcel Identification Number				Folio No	
1	Odd address numbers only			10851 TO 10889 CROSSROADS COMMERCE BLVD	U	05-29-20	B10	000000 00001	65208.0432	
2	Odd address numbers only			10701 TO 10779 CROSSROADS COMMERCE BLVD	U	05-29-20	B10	000000 00002	65208.0434	
3	Even address numbers only			10802 TO 10880 CROSSROADS COMMERCE BLVD	U	05-29-20	B10	000000 00003	65208.0436	
4	Odd address numbers only			10601 TO 10639 CROSSROADS COMMERCE BLVD	U	05-29-20	B10	000000 00004	65208.0438	
Tracts D-1 thru D-3					U	05-29-20	B10	000000 D0001	65208.0440	
Tracts I and R					U	05-29-20	B10	000000 I0000	65208.0442	
				Important Each lot has been issued a range of addressess, based on the possible maximum number of spaces per building. The individual address of each space will be issued at the time when the building permit is applied for based on the location of the door of each proposed space.						



**Hillsborough
County Florida**

**911 AGENCY
STREETS & ADDRESSES UNIT**

**CROSSROADS COMMERCE PARK
PHASES 1 & 2**

SEC 05 TWP 29 RNG 20

ADDRESSES ISSUED ON 06/29/2018

**FOLIO # 065208.0432, 065208.0434,
065208.0436, 065208.0438, 065208.0440
& 065208.0442**

TAMPA 33610

BLDG #	ADDRESS
1	(Building Shell) 10889 CROSSROADS COMMERCE BLVD.
1	10887 CROSSROADS COMMERCE BLVD.
1	10885 CROSSROADS COMMERCE BLVD.
1	10883 CROSSROADS COMMERCE BLVD.
1	10881 CROSSROADS COMMERCE BLVD.
1	10879 CROSSROADS COMMERCE BLVD.
1	10877 CROSSROADS COMMERCE BLVD.
1	10875 CROSSROADS COMMERCE BLVD.
1	10873 CROSSROADS COMMERCE BLVD.
1	10871 CROSSROADS COMMERCE BLVD.
1	10869 CROSSROADS COMMERCE BLVD.
1	10867 CROSSROADS COMMERCE BLVD.
1	10865 CROSSROADS COMMERCE BLVD.
1	10863 CROSSROADS COMMERCE BLVD.
1	10861 CROSSROADS COMMERCE BLVD.
1	10859 CROSSROADS COMMERCE BLVD.
1	10857 CROSSROADS COMMERCE BLVD.
1	10855 CROSSROADS COMMERCE BLVD.
1	10853 CROSSROADS COMMERCE BLVD.
1	10851 CROSSROADS COMMERCE BLVD.

****IMPORTANT****

When combining and/or dividing spaces, the address of the new space will be determined by the location of the door.

**Please contact our office obtain the new address.
911 Agency, Streets & Addresses Unit 813-744-5862**



Hillsborough
County Florida

**911 AGENCY
STREETS & ADDRESSES UNIT**

**CROSSROADS COMMERCE PARK
PHASES 1 & 2**

SEC 05 TWP 29 RNG 20

ADDRESSES ISSUED ON 06/29/2018

**FOLIO # 065208.0432, 065208.0434,
065208.0436, 065208.0438, 065208.0440
& 065208.0442**

TAMPA 33610

BLDG #	ADDRESS
2	(Building Shell) 10771 CROSSROADS COMMERCE BLVD.
2	10701 CROSSROADS COMMERCE BLVD.
2	10703 CROSSROADS COMMERCE BLVD.
2	10705 CROSSROADS COMMERCE BLVD.
2	10707 CROSSROADS COMMERCE BLVD.
2	10709 CROSSROADS COMMERCE BLVD.
2	10711 CROSSROADS COMMERCE BLVD.
2	10713 CROSSROADS COMMERCE BLVD.
2	10715 CROSSROADS COMMERCE BLVD.
2	10717 CROSSROADS COMMERCE BLVD.
2	10719 CROSSROADS COMMERCE BLVD.
2	10721 CROSSROADS COMMERCE BLVD.
2	10723 CROSSROADS COMMERCE BLVD.
2	10725 CROSSROADS COMMERCE BLVD.
2	10727 CROSSROADS COMMERCE BLVD.
2	10729 CROSSROADS COMMERCE BLVD.
2	10731 CROSSROADS COMMERCE BLVD.
2	10733 CROSSROADS COMMERCE BLVD.
2	10735 CROSSROADS COMMERCE BLVD.
2	10737 CROSSROADS COMMERCE BLVD.
2	10739 CROSSROADS COMMERCE BLVD.
2	(New Space) 10741 CROSSROADS COMMERCE BLVD.
2	10743 CROSSROADS COMMERCE BLVD.
2	10745 CROSSROADS COMMERCE BLVD.
2	10747 CROSSROADS COMMERCE BLVD.
2	10749 CROSSROADS COMMERCE BLVD.



**Hillsborough
County Florida**

**911 AGENCY
STREETS & ADDRESSES UNIT**

**CROSSROADS COMMERCE PARK
PHASES 1 & 2**

SEC 05 TWP 29 RNG 20

ADDRESSES ISSUED ON 06/29/2018

**FOLIO # 065208.0432, 065208.0434,
065208.0436, 065208.0438, 065208.0440
& 065208.0442**

TAMPA 33610

BLDG #	ADDRESS
2	10751 CROSSROADS COMMERCE BLVD.
2	10753 CROSSROADS COMMERCE BLVD.
2	10755 CROSSROADS COMMERCE BLVD.
2	10757 CROSSROADS COMMERCE BLVD.
2	10759 CROSSROADS COMMERCE BLVD.
2	10761 CROSSROADS COMMERCE BLVD.
2	10763 CROSSROADS COMMERCE BLVD.
2	10765 CROSSROADS COMMERCE BLVD.
2	10767 CROSSROADS COMMERCE BLVD.
2	10769 CROSSROADS COMMERCE BLVD.
2	10773 CROSSROADS COMMERCE BLVD.
2	10775 CROSSROADS COMMERCE BLVD.
2	10777 CROSSROADS COMMERCE BLVD.
2	10779 CROSSROADS COMMERCE BLVD.

****IMPORTANT****

When combining and/or dividing spaces, the address of the new space will be determined by the location of the door.

**Please contact our office obtain the new address.
911 Agency, Streets & Addresses Unit 813-744-5862**



**Hillsborough
County Florida**

**911 AGENCY
STREETS & ADDRESSES UNIT**

**CROSSROADS COMMERCE PARK
PHASES 1 & 2**

SEC 05 TWP 29 RNG 20

ADDRESSES ISSUED ON 06/29/2018

**FOLIO # 065208.0432, 065208.0434,
065208.0436, 065208.0438, 065208.0440
& 065208.0442**

TAMPA 33610

BLDG #	ADDRESS
3	(Building Shell) 10820 CROSSROADS COMMERCE BLVD.
3	10802 CROSSROADS COMMERCE BLVD.
3	10804 CROSSROADS COMMERCE BLVD.
3	10806 CROSSROADS COMMERCE BLVD.
3	10808 CROSSROADS COMMERCE BLVD.
3	10810 CROSSROADS COMMERCE BLVD.
3	10812 CROSSROADS COMMERCE BLVD.
3	10814 CROSSROADS COMMERCE BLVD.
3	10816 CROSSROADS COMMERCE BLVD.
3	10818 CROSSROADS COMMERCE BLVD.
3	10822 CROSSROADS COMMERCE BLVD.
3	10824 CROSSROADS COMMERCE BLVD.
3	10826 CROSSROADS COMMERCE BLVD.
3	10828 CROSSROADS COMMERCE BLVD.
3	10830 CROSSROADS COMMERCE BLVD.
3	10832 CROSSROADS COMMERCE BLVD.
3	10834 CROSSROADS COMMERCE BLVD.
3	10836 CROSSROADS COMMERCE BLVD.
3	10838 CROSSROADS COMMERCE BLVD.
3	10840 CROSSROADS COMMERCE BLVD.
3	10842 CROSSROADS COMMERCE BLVD.
3	10844 CROSSROADS COMMERCE BLVD.
3	10846 CROSSROADS COMMERCE BLVD.
3	10848 CROSSROADS COMMERCE BLVD.
3	10850 CROSSROADS COMMERCE BLVD.
3	10852 CROSSROADS COMMERCE BLVD.



**Hillsborough
County Florida**

**911 AGENCY
STREETS & ADDRESSES UNIT**

**CROSSROADS COMMERCE PARK
PHASES 1 & 2**

SEC 05 TWP 29 RNG 20

ADDRESSES ISSUED ON 06/29/2018

**FOLIO # 065208.0432, 065208.0434,
065208.0436, 065208.0438, 065208.0440
& 065208.0442**

TAMPA 33610

BLDG #	ADDRESS
3	10854 CROSSROADS COMMERCE BLVD.
3	10856 CROSSROADS COMMERCE BLVD.
3	10858 CROSSROADS COMMERCE BLVD.
3	10860 CROSSROADS COMMERCE BLVD.
3	10862 CROSSROADS COMMERCE BLVD.
3	10864 CROSSROADS COMMERCE BLVD.
3	10866 CROSSROADS COMMERCE BLVD.
3	10868 CROSSROADS COMMERCE BLVD.
3	10870 CROSSROADS COMMERCE BLVD.
3	10872 CROSSROADS COMMERCE BLVD.
3	10874 CROSSROADS COMMERCE BLVD.
3	10876 CROSSROADS COMMERCE BLVD.
3	10878 CROSSROADS COMMERCE BLVD.
3	10880 CROSSROADS COMMERCE BLVD.

****IMPORTANT****

When combining and/or dividing spaces, the address of the new space will be determined by the location of the door.

**Please contact our office obtain the new address.
911 Agency, Streets & Addresses Unit 813-744-5862**



**Hillsborough
County Florida**

**911 AGENCY
STREETS & ADDRESSES UNIT**

**CROSSROADS COMMERCE PARK
PHASES 1 & 2**

SEC 05 TWP 29 RNG 20

ADDRESSES ISSUED ON 06/29/2018

**FOLIO # 065208.0432, 065208.0434,
065208.0436, 065208.0438, 065208.0440
& 065208.0442**

TAMPA 33610

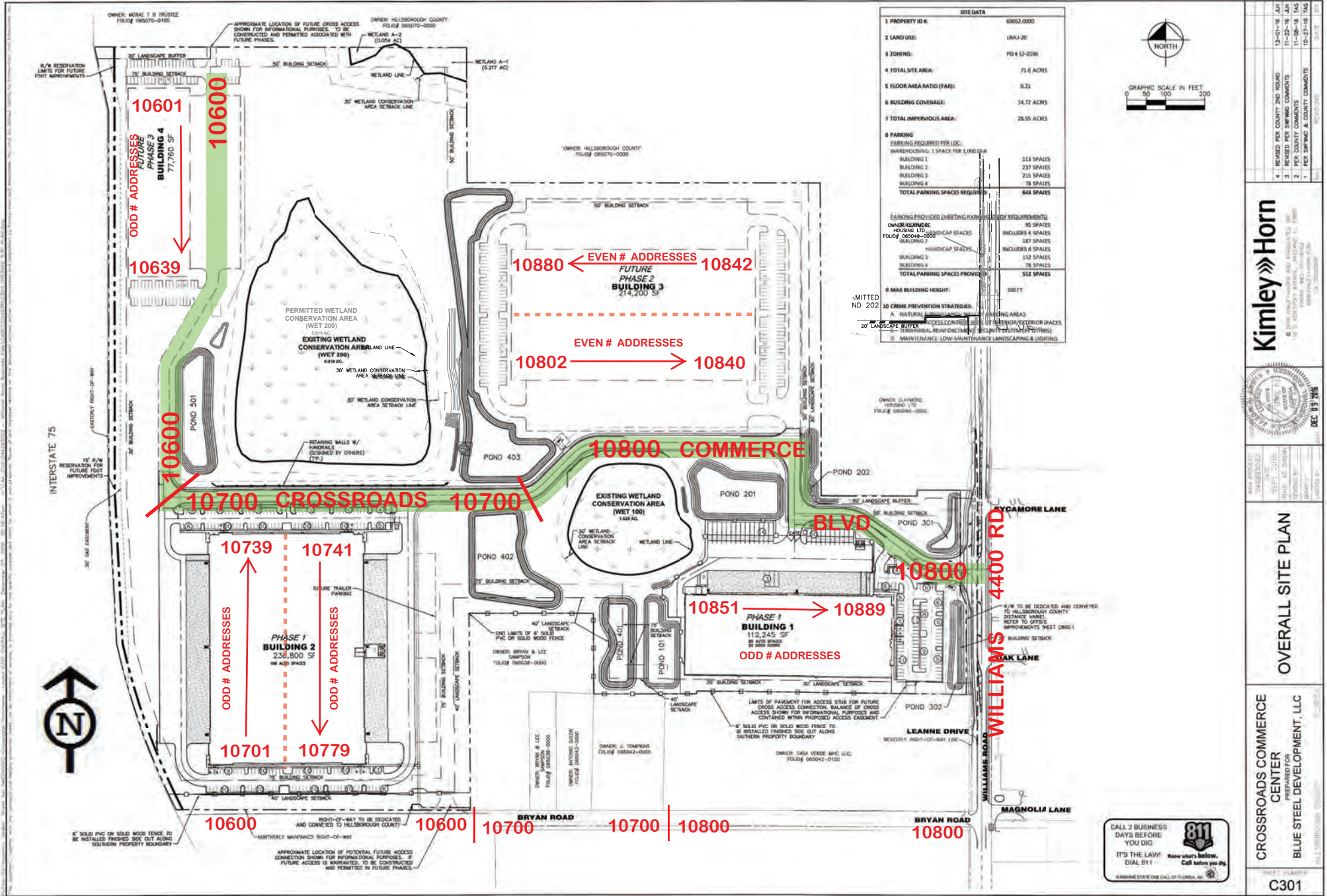
BLDG #	ADDRESS
4	(Building Shell) 10639 CROSSROADS COMMERCE BLVD.
4	10637 CROSSROADS COMMERCE BLVD.
4	10635 CROSSROADS COMMERCE BLVD.
4	10633 CROSSROADS COMMERCE BLVD.
4	10631 CROSSROADS COMMERCE BLVD.
4	10629 CROSSROADS COMMERCE BLVD.
4	10627 CROSSROADS COMMERCE BLVD.
4	10625 CROSSROADS COMMERCE BLVD.
4	10623 CROSSROADS COMMERCE BLVD.
4	10621 CROSSROADS COMMERCE BLVD.
4	10619 CROSSROADS COMMERCE BLVD.
4	10617 CROSSROADS COMMERCE BLVD.
4	10615 CROSSROADS COMMERCE BLVD.
4	10613 CROSSROADS COMMERCE BLVD.
4	10611 CROSSROADS COMMERCE BLVD.
4	10609 CROSSROADS COMMERCE BLVD.
4	10607 CROSSROADS COMMERCE BLVD.
4	10605 CROSSROADS COMMERCE BLVD.
4	10603 CROSSROADS COMMERCE BLVD.
4	10601 CROSSROADS COMMERCE BLVD.

****IMPORTANT****

When combining and/or dividing spaces, the address of the new space will be determined by the location of the door.

**Please contact our office obtain the new address.
911 Agency, Streets & Addresses Unit 813-744-5862**

CROSSROADS COMMERCE PARK PHASES 1 & 2



Kimley»Horn
 CIVIL ENGINEERS
 1000 W. BROAD ST., SUITE 200
 RICHMOND, VA 23260
 (804) 353-1100
 WWW.KIMLEY-HORN.COM



OVERALL SITE PLAN

CROSSROADS COMMERCE CENTER
 PREPARED FOR
BLUE STEEL DEVELOPMENT, LLC

PROJECT # 18-010
C301

